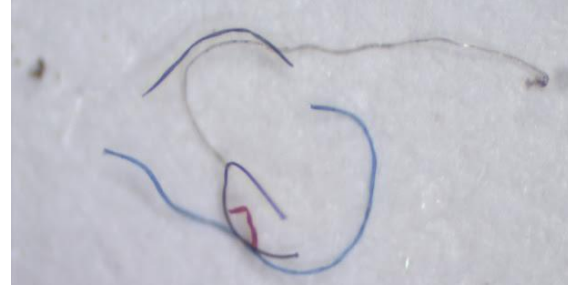


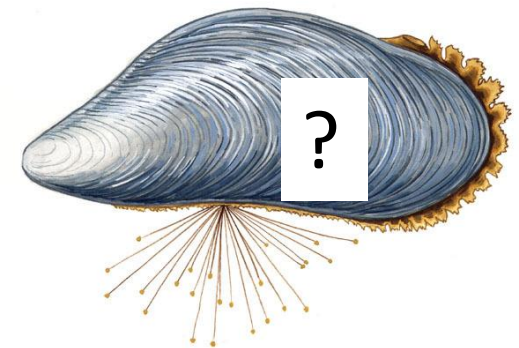
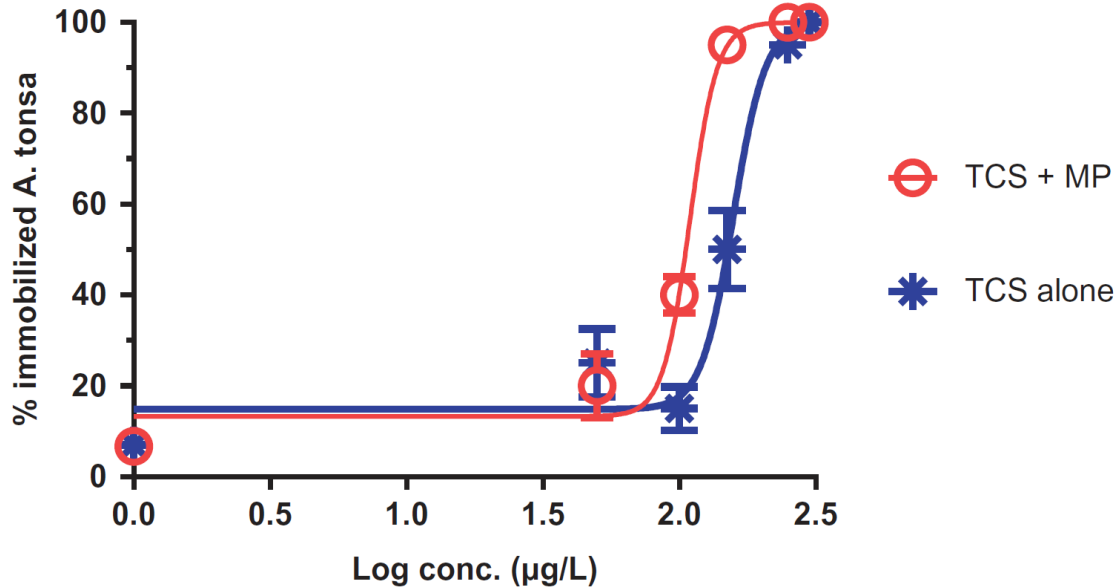


# Overblik over effekt studier

v. Kristian Syberg

# Mikroplast er ikke bare mikroplast





**Table 1.** Concentration Response Parameters for 48 H. Acute Toxicity Experiments. C = Bottom Value, B = Slope, e = LC<sub>50</sub>, R<sup>2</sup> = Coefficient of Determination for Model Fit. Both Normal and Log Concentrations for LC<sub>50</sub>-values are Provided in order to Enable Comparison with Figure 1

Parameters for concentration response model fit	TCS alone (mean ± SE)	Log conc. (mean ± SE)	TCS + MP (mean ± SE)	Log conc. (mean ± SE)
c	14.86 ± 2.17		13.28 ± 1.67	
b	7.41 ± 2.00		8.77 ± 1.23	
e (µg/L)	157.9 ± 0.01	2.198 ± 0.01	109.6 ± 0.01	2.04 ± 0.008
R <sup>2</sup>	0.96		0.98	

